

17 DRAWING MADE IN THIRD ANGLE PROJECTION

3

2

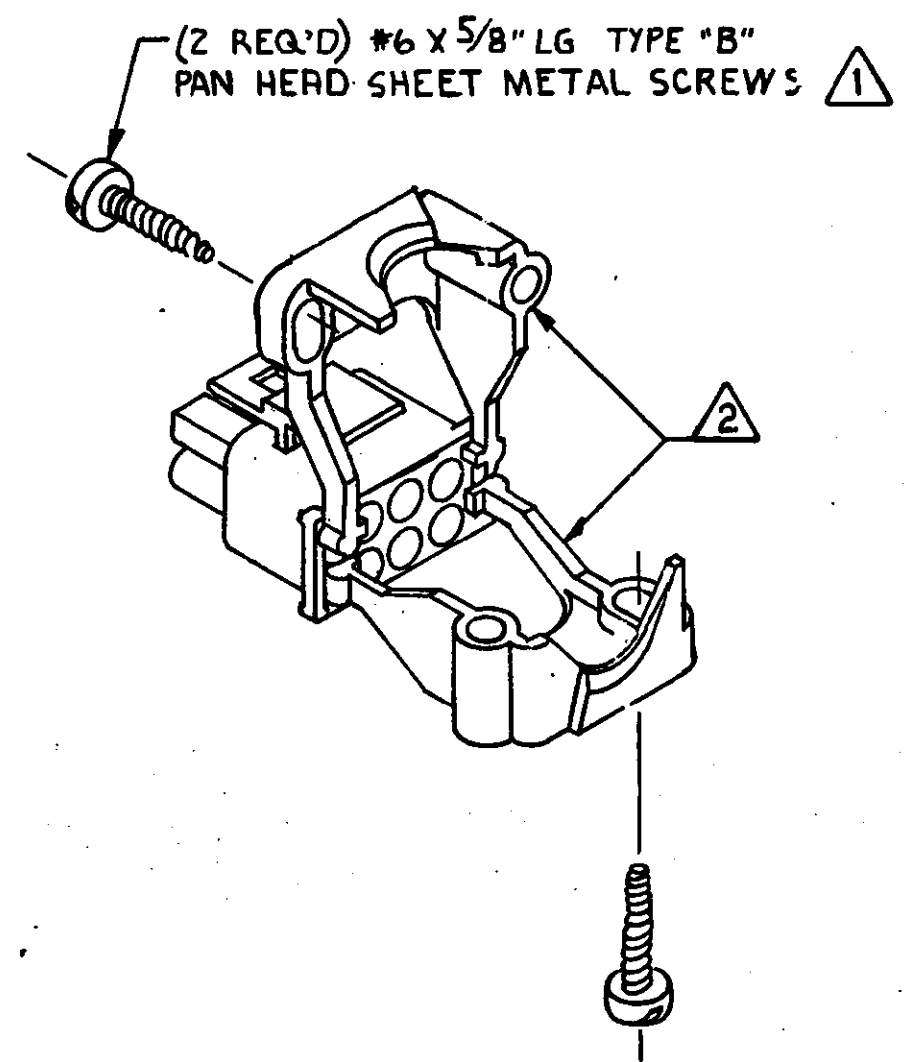
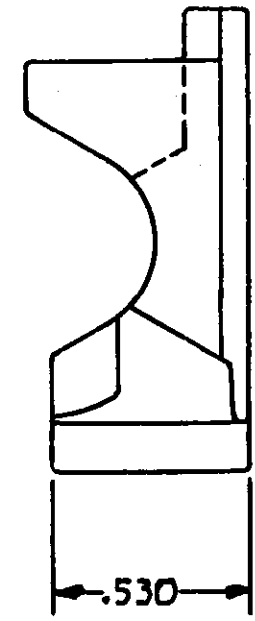
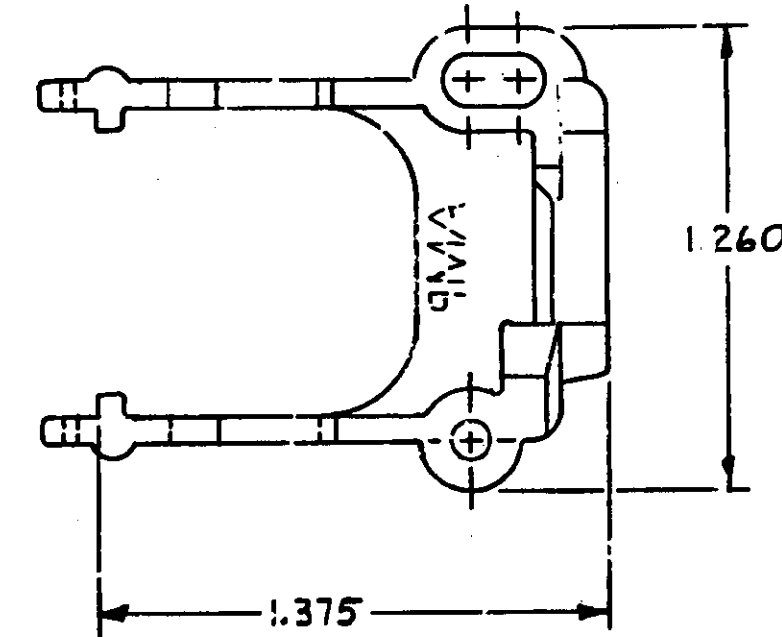
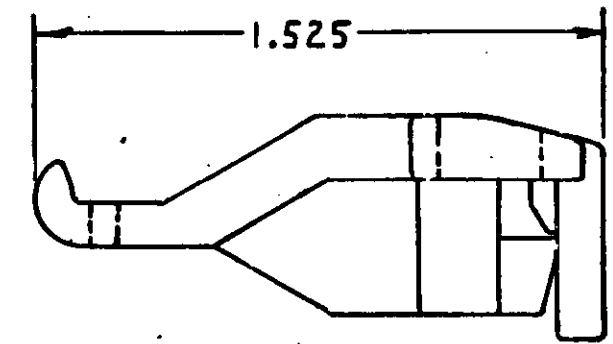
1

LOC CM DIST 53

© COPYRIGHT 1973 BY AMP INCORPORATED, HARRISBURG, PA. ALL INTERNATIONAL RIGHTS RESERVED. AMP INCORPORATED PRODUCTS COVERED BY U. S. AND FOREIGN PATENTS AND/OR PATENTS PENDING.

⚠ SHEET METALS SCREWS NOT SUPPLIED
 TWO REQUIRED PER CONNECTOR.
 FOR USE WITH 6, 9, 12, & 15 CIRCUIT HOUSINGS WITH A WIRE BUNDLE DIAMETER RANGE OF 5/16" TO 1/2".

REVISIONS					
P	F	ZONE	LTR	DESCRIPTION	DATE APPROVED
✓			D	REDRAWN + ADDED 3 VIEW ORTHOGRAPHIC PROJECTION M-566	2-19-80 MSK/J.H.
✓			D ₁	RESTORED	12-7-81 RAH/RS
✓			E	OBSOLETE -2, -3, -4, -5, -6, -7, -8, -9 PER CM-473	4-15-86 KW/RS
✓			F	OBSOLETE -1 PER CM-330	6-6-88 DH/RS
✓			G	REV PER ECN CM 3828	7-31-82 NJG/RS



COLOR	MATERIAL	PART NO
NATURAL	NYLON 94V-2	1-350590-0

UNLESS OTHERWISE SPECIFIED DIMENSIONS ARE IN INCHES. DECIMALS ± .015 ANGLES ±	CONTRACT NO	AMP INCORPORATED Harrisburg, Pa.		
	DR	NAME		
	CHK	STRAIN RELIEF FOR UNIVERSAL MATE-N-LOK™ HOUSING		
	APPD	SIZE	CODE IDENT NO	DRAWING NO
	APPD	C	00779	350590
MATERIAL	DSGN APPD	SCALE	SHEET	
SEE TABLE	OTHER APPD	2-1		
FINISH				
SEE TABLE				

350590